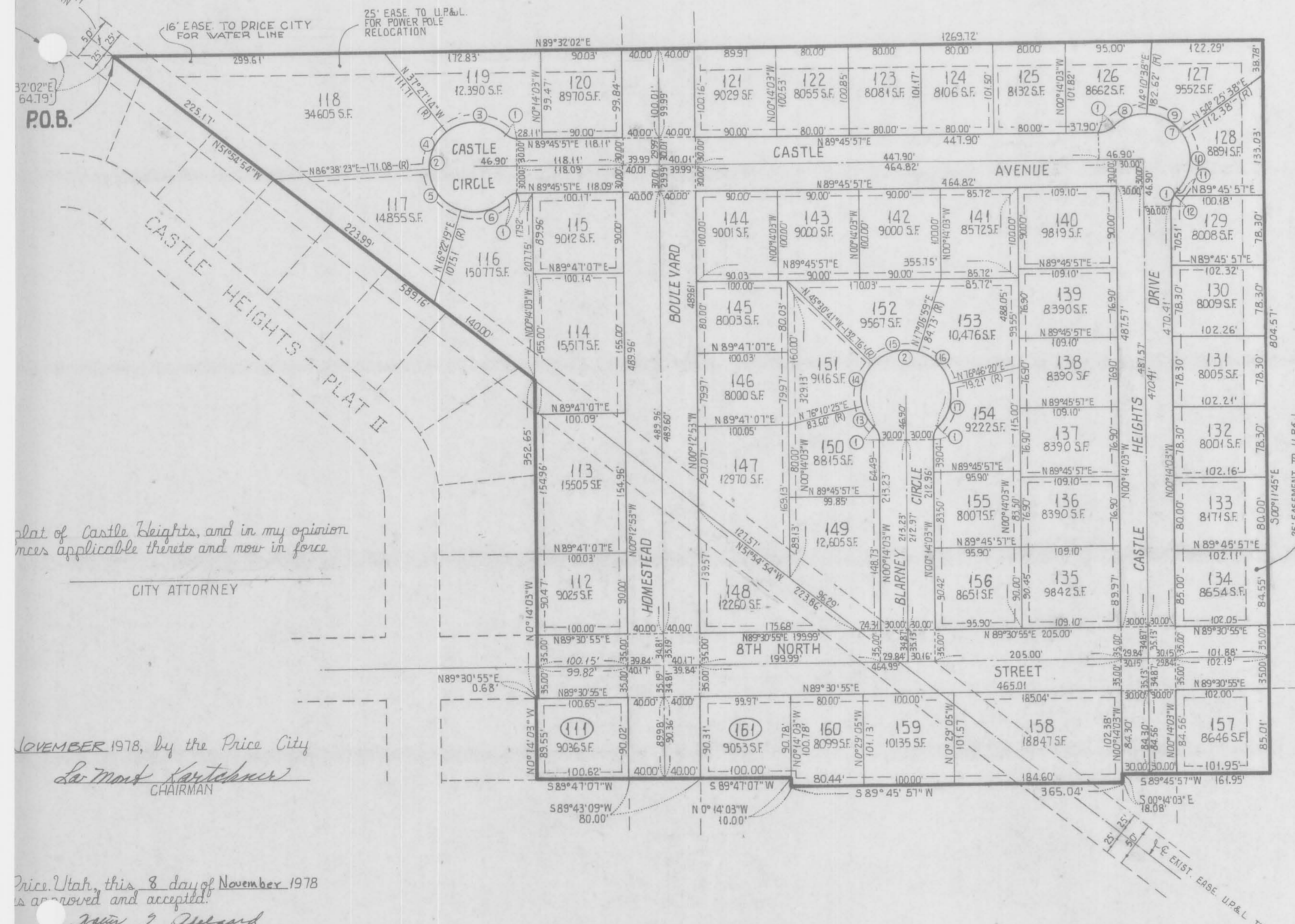


Castle Heights Plat III

Price City, Carbon County, Utah.

Portion of N 1/2 of N.E. 1/4 Section 15, T.14S., R.10E., S.L.B.&M.

Entry No. 1702
 Indexed
 Abstracted
 Rec. Fee \$35.50



OWNER'S DEDICATION

Know all men by these presents that we the undersigned, the herewith described tract of land, having been subdivided into lots and streets to hereinafter described, do hereby dedicate to the public all parcels of land shown on this plat for public use, and do warrant, defend, and save against any easements or other encumbrances on which will interfere with the Cities use, operation of the streets and do further dedicate the easements whereof we have hereunto set our hand and seal this 31st day of August 1978.

GULL ASSOCIATES LTD.
 PRESIDENT John A. Hoot SECRETARY [Signature]

ACKNOWLEDGEMENT

STATE OF UTAH
 COUNTY OF Carbon

On this 31 day of August 1978, personally John A. Hoot and Ray Souder duly sworn, did say that they are the President and Secretary of Gull Associates, Ltd. a Utah Corp., and that they executed the same.

Anastasia V. Thompson Murray Utah
 NOTARY PUBLIC RESIDENCE

SURVEYOR'S CERTIFICATE

I, Jim J. Byrd, a Registered Professional Engineer, holding Certificate No. 3567, as provided by the laws of the State of Utah, do hereby certify that by authority of the State of Utah, I have made a survey of the tract of land shown on this plat, and have subdivided said tract into lots and streets to be known as Castle Heights Plat III, and the same has been surveyed and will be staked as shown on this plat.

Signed on this 31 day of Aug. 1978.

plat of Castle Heights, and in my opinion the same are applicable thereto and now in force

NOVEMBER 1978, by the Price City
LaMond Kartchner
 CHAIRMAN

Price, Utah, this 8 day of November 1978
 is approved and accepted.
Walter J. Bergard
 MAYOR

CURVE DATA				
NO.	DELTA	RADIUS	LENGTH	TANGENT
1	46° 11' 13"	15.00'	12.09'	6.40'
2	272° 22' 26"	50.00'	237.69'	—
3	83° 24' 24"	"	72.79'	44.59'
4	55° 54' 23"	"	48.79'	26.53'
5	70° 16' 04"	"	61.32'	35.18'



BOUNDARY DESCRIPTION

Beginning at a point on the Section Line, said point being 64.79 feet from the N. 1/4 Corner of Section 15, T.14S., R.10E., S.L.B.&M. running thence N89°32'02"E 1269.72 feet along the 40 Acre Line; thence 500°11'45"E 804.57 feet along the 40 Acre Line; thence S89°45'57"W 161.95 feet; thence S00°14'03"W 10000 feet; thence S89°43'09"W 80.00 feet; thence a point on the East Line of Castle Heights Plat II; thence along said Easterly Boundary the lot

1978.

 PRICE CITY ENGINEER